

Welcome...

...to the Sussex Heritage Coast

The magnificent stretch of coastline between Seaford and Eastbourne and inland to the A27 is designated and protected as a 'Heritage Coast'. The Sussex Heritage Coast is the finest example of unprotected chalk cliffs in Britain and includes the famous Beachy Head and Seven Sisters cliffs. Inland the rolling landscape of the South Downs and the meanders of the Cuckmere Valley offer beautiful views and delightful walks.

Whether you are visiting for the day a weekend or planning a longer stay this guide suggests places to visit, where to eat, drink and sleep, all within sight of the South Downs countryside. And what's more this guide gives all necessary public transport information to visit these and many more attractions in the area. You will see from the enclosed map that the area has good bus and rail links. So why not leave your car at home or at your holiday base and take your time to explore the Heritage Coast and its many attractions by bike or on foot.

By leaving your car behind you experience the tranquillity of the South Downs and help to reduce traffic congestion and protect this special landscape. So do your bit to keep the Sussex Heritage Coast beautiful. Enjoy your visit and remember to come again!



Need More Information?

Visitor Information

Tourist Information Centres

Seaford 01323 897426 e-mail seaford.tic@lewes.gov.uk
Cuckmere Community Bus 01323 870920

Useful Tourist Websites

www.sussexcountry.com
www.sussexlive.com
www.cuckmere-valley.co.uk
www.vic.org.uk
www.eastsussexcc.gov.uk
www.seetb.org.uk
www.lewes.gov.uk
www.sussextourism.org.uk
www.cuckmerebus.freeuk.com

Car Free Care Free Holiday?

If you are a UK visitor wanting to discover Normandy by bike or on foot we can arrange your itinerary for you.

We can do the same if you are a French visitor who would like to explore East Sussex. Please call 01273 481543.

This guide has been produced as part of a national 'Tourism without Traffic' demonstration project, which aims to help stimulate the local economy and develop alternatives to car travel for visitors.

Please note that whilst every care has been taken in the preparation of this leaflet, details may be subject to change.



Working in Partnership to Protect the South Downs

The Sussex Heritage Coast and its Villages

The Heritage Coast and its many quaint villages are easily accessed from London and the coastal resorts of Brighton, Eastbourne and Seaford. Lewes, Newhaven, Hailsham and Polegate towns also have excellent rail and bus links into the area and make ideal holiday bases.

12 bus Eastbourne - Brighton

Places of interest include Crowlink downs that comprise 3/2 of the famous Seven Sisters cliffs. Seven Sisters Country Park manage the other 3 1/2 'sisters' and has fabulous views of these cliffs. Friston Forest adjoins the Seven Sisters Country Park and has picnic areas, family cycle and mountain bike trails. On site Bike Hire is available. On Sundays, the 13 bus goes via Beachy Head - visit the Countryside Centre before enjoying the superb views.

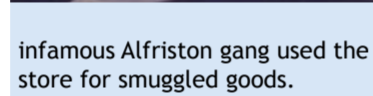
Birlinging Gap is popular with families able to negotiate the steep stairs down to the pebble beach and rock pools. Belle Tout Lighthouse at Beachy Head is over 150 years old and a famous landmark, although it no longer warns ships of the nearby cliffs.

The Seven Sisters Sheep Centre is a family-run farm that has the world's largest collection of breeds of sheep. See and feed the lambs between March and May.

125 bus Lewes - Alfriston

Alfriston is one of the most picturesque villages in the country and well worth a visit for its historic buildings, craft and teasops and its magnificent church known as the 'Cathedral of the Downs'. Places of interest include Glynde Place built in 1589 which holds a collection of Old Masters, furniture and other items acquired by the family over 400 years.

Firle Place set in an ancient park at the foot of the South Downs, has been the home of the Gage family for over 500 years. Selmeston is one of the few villages that has a priest mentioned against it in the Domesday book of 1086. In the past, the infamous Alfriston gang used the churchyard as a temporary store for smuggled goods.



Alciston village has the remains of a 14th century monastery that was owned by the Battle Abbey. Charleston Farmhouse was home to the unconventional household of Bloomsbury artists Vanessa Bell,



sister of the Sussex writer Virginia Woolf and Duncan Grant from 1916. Taking inspiration from the post-impressionists the artists transformed the house

with Italian fresco paintings. The garden with its mosaics and gravel pathways is reminiscent of southern Europe. Middle Farm is home to the National Cider and Perry Collection and offers tasting sessions! There is a children's playground and a superb locally stocked farm shop.

126 bus Eastbourne - Seaford

Seaford is a Victorian seaside town with an unspoiled coastline, stunning scenery and a bustling shopping centre. Places of interest include Seaford's Martello Tower part of a line of Martello Towers established along the South Coast of England to repel French troops during the Napoleonic Wars. The Tower has been restored and is now home to the Seaford Museum. Nearby Alfriston village has lots to offer visitors, saunter through the village browsing in all the shops and then stroll along the beautiful Cuckmere River. Drusillas Zoo is ideal for families with a wide variety of animals in naturalistic environments, including Meerkats!

Michelham and Middle Farm Rambler: Berwick, Hailsham, Polegate, Alfriston, Middle Farm

The historic market town of Hailsham famous for making all the ropes for public hangings! Places of interest include Arlington Reservoir, beautiful Michelham Priory built in 1229 which has the longest water filled moat in England. Abbots Wood offers excellent woodland walks, horse and cycle rides.



Arlington Reservoir covers 120 acres and is renowned for its bird life. Opportunities for picnicking, walking cycling and fishing (day permits available).

Cuckmere Valley Ramblerbus: Alfriston, Berwick, Litlington, Wilmington, Exceat.

Places of interest include High & Over wonderful views of the Cuckmere Valley, Alfriston Clergy House, carefully restored 14th Century Clergy House was the first property



to be acquired by the National Trust in 1896 for just £10. Also worth visiting are Lullington Church, dating from the 13th century and a part of a much larger church destroyed during the time of Cromwell; all that remains is the chancel, which seats about twenty people. And the Edwardian charm of Litlington Tea Gardens and the impressive Long Man of Wilmington a mysterious figure carved in chalk.

Trains from Brighton - Seaford

Places of interest include the historic town of Lewes with its range of shops and imposing Castle built after the 1066 Norman invasion, Newhaven Fort experience what life was like in the First and Second World Wars through interactive exhibitions. Tidemills was once a flourishing village with some 100 residents. Mills were built in the 1760s, using the power of the tide to grind flour. Today foundation walls, the odd section of railway and some of the old mill estuary can be seen. Seaford Head Nature Reserve provides a variety of habitat suitable for wildlife. The views from the top are magnificent, looking down onto the Cuckmere Valley and across to the Seven Sisters Cliffs. The beach can be accessed at Hope Gap and at Cuckmere Haven.



Trains from London - Eastbourne

Eastbourne is a bustling seaside resort with a wide range of activities for everyone. Places of interest include Berwick Church with its famous 1940s murals painted by the Bloomsbury artists. Arlington Reservoir covers 120 acres and is renowned for its bird life. Opportunities for picnicking, walking cycling and fishing (day permits available).



Trains from Brighton - Seaford

Need More Information?

Travel Information

Bus

Detailed timetable books containing full bus information are available from Tourist Information Centres.

Traveline for all bus time enquiries 0870 608 2 608

National Express 08705 808080

Train

National Rail Enquiries 08457 484950

Disabled Persons Travel Arrangements 08706 030405

Textphone 08456 050600

www.nationalrail.co.uk

www.rail.co.uk

www.southernrailway.com

Ferry

Transmanche Ferries (Newhaven-Dieppe) 08009 171201

www.transmancheferries.com

Walking

www.southeastwalks.com

South Downs Way National Trail
Sussex Downs Conservation Board
01323 871095

www.nationaltrails.co.uk

www.vic.org.uk

Cycling

Cycle Touring Club www.ctc.org.uk

Sustrans www.sustrans.org.uk

www.vic.org.uk

Horse Riding

British Horse Society www.bhs.org.uk



Where to Eat

Country Pubs & Inns

All pubs serve food 1200-1400 and 1900-2100. Some pubs serve for longer hours - please call to enquire.

Pub/Inn	Phone	Icons
Alciston		
Rose Cottage Inn	01323 870377	☎️🍷🍴
Alfriston		
Deans Place Hotel	01323 870248	☎️🍷🍴
George Inn	01323 870319	☎️🍷🍴
Smugglers Inn	01323 870241	☎️🍷🍴
The Star	01323 870495	☎️🍷🍴
Wingrove Inn	01323 870276	☎️🍷🍴
Arlington		
Old Oak Inn	01323 482072	☎️🍷🍴
Yew Tree Inn	01323 870590	☎️🍷🍴
Beachy Head		
Beachy Head	01323 728060	☎️🍷🍴
Berwick		
Berwick Inn	01323 871277	☎️🍷🍴 No food Sunday eve
Cricketers Arms	01323 870469	☎️🍷🍴
Birlinging Gap		
Birlinging Gap Hotel	01323 423197	☎️🍷🍴
Denton		
Flying Fish	01273 515440	☎️🍷🍴
East Dean		
Tiger Inn	01323 423209	☎️🍷🍴
Exceat		
Golden Galleon	01323 892247	☎️🍷🍴
Firle		
Ram Inn	01273 858222	☎️🍷🍴 Food all day Sat & Sun
Glynde		
Trevor Arms	01273 858208	☎️🍷🍴
Jevington		
Eight Bells	01323 484442	☎️🍷🍴 Food all day Sat & Sun
Litlington		
Plough & Harrow	01323 870632	☎️🍷🍴
Milton Street		
The Sussex Ox	01323 870840	☎️🍷🍴
Rodmell		
Abergavenny Arms	01273 472416	☎️🍷🍴 No food Sundays
Selmeston		
Barley Mow	01323 811322	☎️🍷🍴
South Heighton		
Hampden Arms	01273 514529	☎️🍷🍴

Upper Dicker

The Plough	01323 844859	☎️🍷🍴
Wilmington		
Giant's Rest	01323 870207	☎️🍷🍴

Restaurants & Tea Rooms

Restaurant/Tea Room	Phone	Icons
Alfriston		
Deans Place Hotel	01323 870248	☎️🍷🍴
George Inn	01323 870319	☎️🍷🍴
The Star	01323 870495	☎️🍷🍴
The Tudor House	01323 870891	☎️🍷🍴
White Lodge		
Country House Hotel	01323 870265	☎️🍷🍴
Wingrove Inn	01323 870276	☎️🍷🍴
Badgers	01323 870849	☎️🍷🍴
Chestnuts Tea Rooms	01323 870298	☎️🍷🍴
Saddlers Tea Rooms	01323 870434	☎️🍷🍴
The Singing Kettle	01323 870723	☎️🍷🍴
Beachy Head		
Beachy Head	01323 728060	☎️🍷🍴
Birlinging Gap		
Birlinging Gap Hotel	01323 423197	☎️🍷🍴
Exceat		
Exceat Farmhouse	01323 870218	☎️🍷🍴
Filching		
Gibbys Cottage Tea Rooms	01323 482484	☎️🍷🍴
Firle		
Firle Place Restaurant	01323 858307	☎️🍷🍴
Glynde		
Glynde Place	01273 858766	☎️🍷🍴 June-Sep Wed & Sun
Jevington		
Jevington Tea Rooms	01323 484745	☎️🍷🍴
The Hungry Monk	01323 482178	☎️🍷🍴
Litlington		
Litlington Tea Gardens	01323 870222	☎️🍷🍴
Selmeston		
Middle Farm	01323 811411	☎️🍷🍴
Silletts Cottage	01323 811343	☎️🍷🍴
Wilmington		
Wishing Well Tea Rooms	01323 487967	☎️🍷🍴
Crossways Hotel	01323 482455	☎️🍷🍴

Suggested Walks

It is recommended that you wear appropriate clothing and footwear, carry the relevant map and let someone know where you are going and what time to expect you back. Please note: mobile phones may not work in the area.

Beachy Head to Seven Sisters Country Park

8 miles, strenuous, steep hills and stiles. 4 1/2 hours.

A magnificent walk along the 'Heritage Coast'. Directions are easy - from Beachy Head keep the sea on your left until you come to the Cuckmere river and walk up the valley until you get to the bus stops at the Visitor Centre on the A259, where the 12 or 13 bus will be along shortly.

Refreshments at Beachy Head, Birling Gap, Golden Galleon and Seven Sisters Country Park.

Berwick Station to Seaford, via Cuckmere Haven

9 miles, moderate walk, some hills. 4 1/2 hours.

Take the train to Berwick Station and then walk the length of the Cuckmere Valley following the 'Vanguard Way' footpath signs to the sea at Cuckmere Haven. Walk over Seaford Head for the classic views of Seven Sisters before descending to Seaford and your train or bus home.

Refreshments at Berwick, Alfriston, Litlington, Seven Sisters Country Park, Golden Galleon and Seaford.

Ordnance Survey Explorer map 123 covers the entire area and is available from bookshops or Seven Sisters Country Park, tel 01323 870280.

e-mail: sevensisters@southdowns.aonb.gov.uk

Easy Access Trails

Cuckoo Trail: the section between Polgate and Hailsham is an easy access trail.

Seven Sisters Country Park: this award winning trail gives access to the Cuckmere River meanders.

High and Over: viewpoint - track with superb views of the Cuckmere Valley and accessible picnic tables.

United Nations Peace Path: this surfaced track offers stunning views of Eastbourne and Beachy Head Lighthouse.

Butts Brow - Birling Gap: new trail over Open Downland.

Arlington Reservoir: mostly surfaced track to the dam.

Ouse Estuary: new surfaced path alongside Nature Reserve.

Note: these trails are shown in orange on the map

Where to Stay

Hotels, Guest Houses, Inns, Farmhouses, Bed & Breakfast

There are many excellent accommodation providers along the Sussex Heritage Coast.

Further information can be found at Tourist Information Centres or on the website www.vic.org.uk

Budget Traveller

Caravan and Camping Sites, Camping Barns and Youth Hostels

Touring Sites

Newhaven: Three Ponds Holiday Park 01273 513530

Polegate: Peel House Farm 01323 845629

Seaford: Buckle Caravan & Camping Park 01323 897801

Backpackers Sites (pre-booking essential)

Alfriston: Pleasant Rise Farm 01323 870560

Milton Street: The Sussex Ox 01323 870840

Jevington: Ash Farm 01323 487335

Seven Sisters Country Park: Foxhole 01323 870280

e-mail: sevensisters@southdowns-aonb.gov.uk

Youth Hostel Association

Alfriston: 01323 870423 e-mail: alfriston@yha.org.uk

Telscombe: 01273 301357

e-mail: reservations@yha.org.uk

Camping Barn

 (pre-booking essential)

Seven Sisters Country Park: Foxhole 01323 870280

e-mail: sevensisters@southdowns-aonb.org.uk



Cycle Routes

All these routes are accessible from the Hiker Biker bus.

Old Coach Road: this route runs along the foot of the downs with links to the attractive villages of Firle, Alciston, Berwick and Alfriston. Accessed from Glynde and Berwick stations.

Seven Sisters Country Park: a gentle 2 mile ride to the beach suitable for all the family. Bikes available for hire on site.

Friston Forest: there are two signed routes, a family route and a technical route. Both start from Seven Sisters Country Park. The family route has a few small slopes and takes around an hour to cycle.

Southeast to Eastbourne: along the South Downs Way. Take the train to Southeast and follow the national trail back via Alfriston and Jevington villages into Eastbourne.

Cuckoo Trail: this 17km traffic-free route through the rolling Sussex countryside is an ideal choice for walking, cycling and horse riding. Access by train from Polegate station or Michelham and Middle Farm Rambler bus.

Please note that cyclists are not allowed on footpaths.

SUSSEX HERITAGE COAST - TRAVEL AND LEISURE INFORMATION



Summary of Rail Services

Please note: the rail times shown below are a GENERAL GUIDE only. Figures are minutes past the hour. For detailed information please refer to the Need More Information section overleaf.

Lewes to Eastbourne		Brighton to Eastbourne		Eastbourne to Brighton	
Mon-Sat	Sun	Mon-Sat	Sun	Mon-Sat	Sun
Lewes 09	23 39 52	Brighton 24	54	Eastbourne 09	34
Glynde 15	...	Lewes 39	09	Polegate 16	42
Berwick 20	...	Berwick ...	20	Lewes 28	59
Polegate 25	35 52 05	Polegate 52	25	Brighton 45	15
Eastbourne 34	42 59 12	Eastbourne 59	34		

Brighton to Seaford		Eastbourne to Lewes		Seaford to Brighton	
Mon-Sat	Sun	Mon-Sat	Sun	Mon-Sat	Sun
Brighton 12	42	Eastbourne 00	09 30 34	Seaford 25	58
Lewes 28	58	Polegate 06	16 36 42	Bishopstone 27	00
Southeast 34	...	Berwick	Newhaven Harbour 30	03
Newhaven Town 36	06	Glynde	Newhaven Town 32	05
Newhaven Harbour 40	08	Lewes 18	28 48 59	Southeast 36	...
Bishopstone 43	11			Lewes 44	14
Seaford 45	14			Brighton 00	30

Hiker Biker Bus 823

The Hiker Biker Bus runs along the Sussex coast between Seaford and Eastbourne, allowing easy access to Cuckmere Haven, the Seven Sisters and Friston Forest.

For those willing to go a little further afield, the bus is also convenient for the picturesque villages of Alfriston and Lullington, as well as the famous cliffs at Birling Gap and Beachy Head.

The Hiker Biker Bus runs frequently between Seaford and Eastbourne, and is fitted with specially designed bike racks that can carry up to six bikes. It's not expensive, and bikes are carried free of charge.

Sundays and Public Holidays

Seaford (Rail Station ⇌)	1005	1105	1305	1405	1505	1605
Seaford (Chyngton Gardens)	1009	1109	1309	1409	1509	1609
Exceat (Park Centre)	1012	1112	1312	1412	1512	1612
East Dean (Bus Shelter)	1019	1119	1319	1419	1519	1619
Eastbourne (Terminus Road ⇌)	1030	1130	1330	1430	1530	1630

Eastbourne (Terminus Road ⇌)	1035	1135	1335	1435	1535	1635
East Dean (Bus Shelter)	1046	1146	1346	1446	1546	1646
Exceat (Park Centre)	1053	1153	1353	1453	1553	1653
Seaford (Chyngton Gardens)	1056	1156	1356	1456	1556	1656
Seaford (Rail Station ⇌)	1100	1200	1400	1500	1600	1700

Langham Quality Hotel, Eastbourne

10% discount off room rate with a valid bus ticket from the 12, 13, CCB and 126 services. Present one valid ticket per person when checking out of the hotel. Terms and conditions apply, subject to availability. For more details please call 01323 731451.

Michelham & Middle Farm Rambler

Sundays and Public Holidays

trains from Hastings & Eastbourne	1004	04, 34	1704
trains from London, Brighton, Lewes	1011	11, 41	1711
Berwick	1012	12	1712
Upper Dicker	1016	16	1716
Michelham	1017	17	1717
Hailsham	1025	then 25	1725
Polegate	1032	at 32	1732
Wilmington	1037	these 37	1737
Berwick	1040	mins 40	until 1740
Alfriston	1044	past 44	1744
Berwick	1047	each 47	1747
Selveston	1050	hour 50	1750
Charleston	1051	51	1751
Middle Farm	1053	53	1753
Selveston	1057	57	1757
Berwick	1100	00	1800

trains to Lewes, Brighton, London 1104 04, 34 1804
trains to Eastbourne & Hastings 1111 11, 41 1811

Cuckmere Valley Ramblerbus

Saturdays

trains from Hastings & Eastbourne	0949	49	1649
trains from London, Brighton, Lewes	1020	20	1720
Berwick	1022	22	1722
Drusillas Zoo	1025	25	1725
Alfriston	1030	30	1730
Youth Hostel	1032	32	1732
High and Over	1034	then 34	1734
Seaford	1036	at 36	1736
Library	1042	these 42	1742
trains from Brighton & Lewes	1012	mins 12	until 1712
trains to Lewes & Brighton	1100	past 00	1800

trains from Brighton & Lewes 1012 mins 12 until 1712
trains to Lewes & Brighton 1100 past 00 1800

Exceat Golden Galleon 1047 each 47 1747
Seven Sisters Country Park 1049 hour 49 1749
Friston Forest West Dean Car Pk 1051 51 1751
Litlington Plough & Harrow 1055 55 1755
Wilmington Giants Rest 1103 03 1803
Berwick Drusillas Zoo 1106 06 1806
Rail Station ⇌ 1109 09 1809

trains to Eastbourne & Hastings 1120 20 1820
trains to Lewes, Brighton, London 1149 49 1849

Sundays and Public Holidays

trains from Hastings & Eastbourne	1004	04	1704
trains from London, Brighton, Lewes	1010	10	1710
Berwick	1012	12	1712
Drusillas Zoo	1015	15	1715
Alfriston	1020	20	1720
Youth Hostel	1022	22	1722
High and Over	1024	24	1724
Seaford	1026	26	1726
Sutton Avenue	1029	29	1729
Safeway	1031	then 31	1731
Sutton Corner	1034	at 34	1734
Library	1032	these 32	1732
trains from Brighton & Lewes	1019	mins 19	until 1719
trains to Lewes & Brighton	1054	past 54	1754

trains from Brighton & Lewes 1019 mins 19 until 1719
trains to Lewes & Brighton 1054 past 54 1754

Exceat Golden Galleon 1037 each 37 1737
Seven Sisters Country Park 1039 hour 39 1739
Friston Forest West Dean Car Pk 1041 41 1741
Litlington Plough & Harrow 1045 45 1745
Lullington Corner 1047 47 1747
Wilmington Priory 1052 52 1752
Berwick Giants Rest 1053 53 1753
Drusillas Zoo 1056 56 1756
Crossroads 1057 57 1757
Rail Station ⇌ 1059 59 1759

trains to Eastbourne & Hastings 1110 10 1810
trains to Lewes, Brighton, London 1104 04 1804

Summary of 12 / 12A / 13*

Mondays to Saturdays (except Public Holidays)

Brighton Churchill Square – Eastbourne Pier

Approximately every 15 minutes between 0641 and 1738
Service starts from Hove every 30 minutes between 1012 and 1742

Evenings: **Brighton Station – Seaford** every 30 minutes 1915 to 2145, then 2235, 2305
Brighton Station – Eastbourne 1915, 2145, 2305

Eastbourne Pier – Brighton Old Steine

Approximately every 20 minutes between 0652 and 1930

Evenings: **Eastbourne (opp Arndale Centre) – Brighton** 1935, 2035
Seaford – Brighton 2027, 2057, 2157

125 Lewes - Alfriston

Operated by RDH Services all year round

Mondays to Fridays

Day Code	⊕	⊖	⊕	⊖	⊕	⊖	⊕	⊖
Lewes	Rail Station ⇌	0817	0836	0935	1100	1230	1415	1730
Bus Station	0938	1103	1233	1418	1733	
Tesco	0941	1106	1236	1421	...	
Beddingham	A26/A27 Jn	...	0842	0946	1111	1241	1426	1741
Cobbe Post Office	1245	...	
Glynde	Post Office ⇌	0846	0846	0950	1115	1249	1430	1745
Fire	Turning A27	0849	0849	0955	1120	1254	1435	1750
Post Office	0958	1123	1257	1438	1753
Ripe Lane	0851	0851	1002	1127	1301	1442	1757	
Selveston	opp. Barley Mow	1005	1130	1304	1445	1800
Berwick	Drusillas Zoo	1008	1133	1307	1448	1803
Alfriston	Coach Park	1011	1136	1310	1451	1806
Alfriston	Coach Park	1015	1145	1315	1505	1810
Berwick	Drusillas Zoo	1018	1148	1318	1508	1813
Selveston	opp. Barley Mow	1021	1151	1321	1511	1816
Fire	Ripe Lane	0851	1024	1154	1324	1514
Post Office	0855	1028	1158	1328	1518
Turning A27	0858	1031	1201	1331	1521
Glynde	Post Office ⇌	0901	1034	1204	1334	1524
Beddingham	A26/A27 Jn	0903	1036	1206	1336	...
Lewes	Tesco	1040
Bus Station	0911	1048	1214	1343	...
Rail Station ⇌	0914	1051	1217	1346	1552

Explanation of Codes ⊕: Schooldays only ⊖: Non-schooldays

Saturdays

Lewes	Bus Station	0821	0935	1100	1330	1500
Station Street ⇌	0938 <td>1103 <td>1333 <td>1503</td> </td></td>	1103 <td>1333 <td>1503</td> </td>	1333 <td>1503</td>	1503
Tesco	0941	1106 <td>1336 <td>1506</td> </td>	1336 <td>1506</td>	1506
Beddingham	A26/A27 Jn	0827	0946	1111	1341	1511
Cobbe Post Office	1345	...
Glynde	Post Office ⇌	0831	0950	1115	1349	1515
Fire	Turning A27	0834	0955	1120	1354	1520
Post Office	0958	1123	1357
Ripe Lane	0836	1002	1127	1401	1527	
Selveston	opp. Barley Mow	1005	1130	1404
Berwick	Drusillas Zoo	1008	1133	1407
Alfriston	Coach Park	1011	1136	1410
Alfriston	Coach Park	1015	1145	1415
Berwick	Drusillas Zoo	1018	1148	1418
Selveston	Barley Mow	1021	1151	1421
Fire	Ripe Lane	0836	1024	1154	1424	1554
Post Office	0840	1028	1158
Turning A27	0843	1031	1201
Glynde	Post Office ⇌	1034	1204	1434
Beddingham	A26/A27 Jn	0847	1036	1206	1436	1606
Lewes	Tesco	1048	1214
Bus Station	0859	1051	1217

126 Eastbourne - Seaford

Operated by Renown Services all year round

Mondays to Saturdays only

Day Code	NS	NS	NS	NS	NS
Eastbourne	Terminus Road ⇌	0733	0940	1140	1430
Hospital Grounds	0740	0948	1148	1438	1738
Wilmington Road	Park Avenue	0743	0953	1153	1443
Wilmington Village	0745	0955	1155	1445	1745
Polegate	High Street ⇌	0755	1005	1205	1455
Wilmington	Crossroads	0801	1011	1211	1501
Berwick	Drusillas Zoo	0804	1014	1214	1504
Alfriston	Square	0810	1020	1220	1510
Seaford	Chyngton Estate	0821	1031	1231	1521
Library	1035	1235	...
Safeways Store	0833	1038	1238	1533	1827
Seaford	Safeways Store	0840	1040	1235	1535
Library	0843	1043
Chyngton Estate	0847	1047	1332	1542	...
Alfriston	Square	0853	1053	1338	1548
Berwick	Drusillas Zoo	0859	1059	1344	1554
Wilmington	Bus Shelter	0903	1103	1348	1558
Polegate	High Street ⇌	0909	1109	1354	1604
Wilmington	Village	0919	1119	1404	1614
Wilmington Road	Park Ave	0920	1120	1405	1615
Eastbourne	Hospital Grounds	0928	1128	1413	1623
Terminus Road ⇌	0935	1135	1420	1630	...

Explanation of Codes: NS: The 0733 journey does not run on Saturdays

Brighton - Newhaven - Seaford - Eastbourne

Sundays and Public Holidays

Brighton Churchill Square – Eastbourne Pier

Approximately every 20 minutes between 0805 and 1835

Evenings: **Brighton Station – Seaford** 1945, 2045, 2145, 2305
***13 runs hourly from Brighton Churchill Square to Eastbourne Arndale Centre 0955 to 1655**

Eastbourne Pier – Brighton Churchill Square

Approximately every 20 minutes between 0930 and 1830

Evenings: **Eastbourne (opp Arndale Centre) – Brighton** last service 1915
Seaford – Brighton 2037 and 2137
***13 runs hourly from Eastbourne Pier via Beachy Head to Brighton Churchill Square 0930 to 1830**