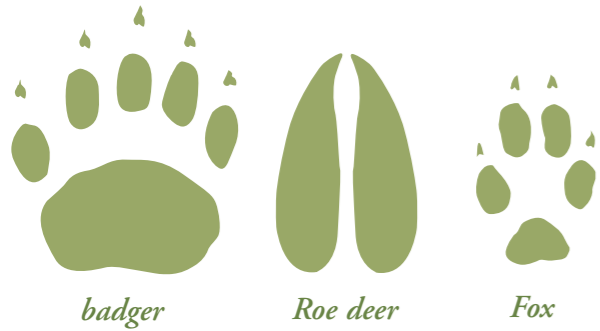


Footprints

Some of the wildlife that live around the trail are very shy. We know that they live here by looking for signs such as dung, gnaw and scratch marks, and their footprints. When you find a muddy patch have a look for any footprints they might have left behind. Maybe you can match some to the prints shown here.



Downland turf

We are lucky enough to have one of the richest wildlife habitats of Western Europe on our own doorstep. Chalk grassland has a great diversity of plants and animals, many of which are internationally rare or threatened. It can support over 50 different species of flowering plant per square metre!



Birds-foot trefoil

Around the nature trail you will see areas of chalk grassland. These areas are carefully managed to retain its existence and quality. Back in the 19th century chalk grassland covered more than 50% of

the South Downs, and now it is only 3%. It is dependent on appropriate grazing, or it becomes taken over by coarse grasses and shrubs. These shade out the light that the delicate chalk grassland needs.



South Downs sheep

Chalk grassland occurs where soils are very thin, well drained, nutrient poor and overlay chalk bedrock. It is characterised by a mixture of grasses and wildflowers, in particular herbs, with a few shrubs and trees. This supports many animals including butterflies such as the Adonis blue and silver-spotted skipper, and birds such as skylarks and corn buntings.



Adonis blue butterfly

We would like to thank West Sussex County Council, Steyning Parish Council and Wiston Estate for all their help in producing this guide.

THE WISTON ESTATE

Steyning
Parish Council



Designed by the South Downs Joint Committee
© South Downs Joint Committee 2006 Tel: (01243) 558700

Publication no. SDJC 1

How to get there

Steyning is situated just off the A283 between Shoreham and Storrington. From Steyning High Street turn into Church Street (opposite the White Horse Pub). The car park entrance is opposite St. Andrews Church. The trail starts at the Steyning Centre which is situated at the far end of the car park. The main bus stop is at the Clock Tower on High Street.



Further information

West Sussex County Council bus enquiries

Tel: (01243) 777556

Countryside and Landscape
South Downs Joint Committee
Central Area Office

Tel: (01273) 625242

History of Steyning, Steyning Museum

Tel: (01903) 813333

STEYNING

Nature Trail & Open Access

Explore Pepperscombe
& beyond



Access land



www.visitsouthdowns.com

*Working in Partnership to
Protect the South Downs*

Welcome to Pepperscoombe & beyond

Steining is a picturesque downland town. Nestled under the South Downs, it provides a gateway to the beautiful landscape on its very doorstep. The Nature Trail comprises two routes, known locally as the Upper and Lower Horseshoes. The upper route involves a steep climb but rewards you with excellent views of the surrounding countryside.

Where to start

- 1 Follow the footpath into School Lane and turn left into Church Street. Cross the High Street and follow Sheep Pen Lane and Newham Lane for half a mile.
- 2 From here the Upper Horseshoe route (blue arrow) climbs the hill. The Lower Horseshoe route, (yellow arrow) continues through the wood.
- 3 The two routes rejoin here.
- 4 Continue straight ahead crossing Charlton Street and on the left you will find steps that lead down to the High Street. Turn right and return to the start of the trail.



photo © SDJC

Lesser celandine

spring

The first spring flowers in the woodland bloom just before the trees come into leaf so they can keep the light to themselves.

Upper Horseshoe: 3 miles (1.5 hours)
Lower Horseshoe: 2.5 miles (1 hour)



follow the wheelbarrow waymarks and use the map to guide you around the trail

Key

- road
- bridleway
- footpath
- viewpoint
- open access



photo © SDJC

Marbled white

summer

On those warm summer days see how many different butterflies you can spot on the way round the trail.



photo © SDJC

Blackberries

autumn

As the leaves begin to turn you will find fungi appearing in the woodland and the hedgerows will bear lots of berries.



photo © SDJC

Hazel catkins

winter

Just as things begin to look empty, you will see that they are starting to get ready for spring. Look at the buds on the trees.



OPEN ACCESS
a new way to explore

Open access is an exciting new opportunity giving you the right to explore more of the outstanding South Downs landscape. Where you see the open access symbol you can leave the footpath and walk, sightsee, picnic, watch wildlife, run or climb within the mapped area. Cycling, horse riding and driving are not permitted on access land.



Two of these open access areas can be found as you walk around the Nature Trail. Check the map opposite to locate them and begin to explore more of this wonderful chalk grassland landscape.

Please follow the Countryside Code

- Be safe – plan ahead and follow any signs
- Protect plants and animals and take your litter home
- Keep dogs under close control at any time. From 1st March to 31st July your dog must be kept on a short fixed lead to help protect ground nesting birds
- Leave gates and property as you find them

For more information on open access

www.countrysideaccess.gov.uk

Access helpline 0845 100 3298

www.visitsouthdowns.com/openaccess